



News Articles Videos Images Books Search
 Health & Medicine Mind & Brain Plants & Animals Earth & Climate Space & Time Matter & Energy Computers & Math Fossils & Ruins

Science News

Share Blog Cite

Print Email Bookmark

Teeth of Cadavers Reveal Their Identity

ScienceDaily (June 29, 2010) — Researchers from the University of Granada have shown that a person's dental patterns can be used as proof of their identity with the same degree of reliability as DNA testing, the method that forensic police use to reveal the identity of dead bodies. The researchers came to their conclusion after analyzing the dental patterns of more than 3,000 people.

See Also:

Health & Medicine

- Dentistry
- Forensics

Plants & Animals

- Nature
- Biochemistry Research

Science & Society

- Justice
- Legal Issues

Reference

- Bruxism
- Extraction (dental)
- Periodontal disease
- Dentistry

"There is sufficient dental diversity between people to enable a scientifically-based human identification method to be developed for forensic purposes," says Stella Martín de las Heras, lead author of the study and a professor of Legal and Forensic Medicine at the University of Granada (UGR).

In order to reach this conclusion, the researcher and her team carried out a statistical analysis of 3,166 full and partial sets of teeth taken from the databases in the three most recent National Surveys of Oral Health (1993, 2000 and 2005).

Using these data, the team estimated "conditioned dental diversity," eliminating cases where people had all their teeth "present and healthy" or people who were

"edentulous" (without a single tooth in their mouth), as these were of no use for identification purposes.

The results of the study, published in the journal *Forensic Science International*, show variability values of 0.999 (on a scale of 0 to 1), "which is comparable to the rates for a scientifically-based identification method such as mitochondrial DNA," stresses Martín de las Heras.

However, the scientist does acknowledge the limitations of using dental patterns: "Dental characteristics have low stability within the population compared with mitochondrial DNA sequences, which are only affected by mutations and heteroplasmy (different types within the same mitochondria, cell or individual)."

The dental patterns of a population depend on oral health status and, therefore, on age (decay is a cumulative disease) and the therapeutic dental approach of the time. At present, we are in a restorative phase (where teeth are restored) as opposed to extractive (when teeth are removed), as they were previously.

"But by analysing the data bases of dental patterns in Spanish populations according to different age groups and birth cohorts, we found test results with high homogeneity for all the databases, which shows the value of this system for identifying people, and its forensic utility," says the researcher.

Comparing teeth before and after death

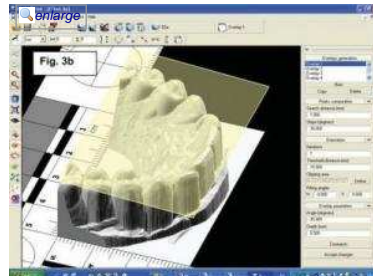
In this procedure, an oral autopsy makes it possible to obtain a cadaver's dental data. To do this, forensic scientists use a range of techniques depending upon the body's state of preservation. In some cases they have to remove the maxillary bones in order to find details that cannot be identified in any other way.

The post mortem dental pattern is compared with the dental data of the person in life, information that is provided by dentists, although it can also come from doctors and family members. Various IT programmes are used to help in comparison and identification.

Aside from this finding, the team has developed a piece of software to identify bite marks. This tool makes it possible to superimpose, precisely and in 3D, the mark left by a bite over the tooth arrangement of a possible suspect.

Email or share this story: | More

Story Source:



No two people have the same teeth. (Credit: Stella Martín de las Heras et al.)

Ads by Google

Muscle Relief for Runners

Biomechanical Stimulation (BMS)
 Now recover faster with Swiss Tech
[SwissTTP.com](#)

98% Thyroid Disease Cured

100% Natural Herbs, with TGA, GMP, SGS. Thousands of recovery cases!
[www.greenlife-herbal.com](#)

Animal Models

Preclinical Studies Indicate
 Interested Findings
[www.InsightPharmaReports.com](#)

XLoupe Fingerprint Camera

Directly Find Fingerprints
 in Crime Scene Investigation
[www.Lumos.com.tw](#)

Related Stories

Duties to Human Remains in Universities and Museums

(May 12, 2010) — Human remains are stored in universities and museums all over the world. A recent example of genetic testing on old human remains is the results from Tutankhamon and his family. A Swedish researcher ... [read more](#)

Bitemark Evidence And Analysis Should Be Approached With Caution, According To Study

(Sep. 17, 2009) — Against the backdrop of last week's Congressional hearing into the future of forensic science, researchers have published a landmark paper on the controversial topic of bitemark ... [read more](#)



Are Women More Generous? New Study Sheds Light On Donation Behavior

(Feb. 25, 2009) — Why would women give more to the victims of Hurricane Katrina than to the victims of the Indian Ocean tsunami? A new study sheds light onto the way gender and moral identity affect ... [read more](#)

New Study Identifies Louse-Borne Diseases That Ravaged Napoleon's Army

(Dec. 15, 2005) — Using dental pulp extracted from the teeth of soldiers who died during Napoleon's disastrous retreat through Russia in 1812, a new study finds DNA evidence that epidemic typhus and trench fever ran ... [read more](#)



Putting Teeth Into Forensic Science

(June 16, 2010) — In a large natural disaster, such as the Haitian earthquake earlier this year, or in an unsolved homicide case, knowing the birth date of an individual can guide forensic investigators to the correct ... [read more](#)

Ads by Google

Seguros a Ciencia Cierta

Tu Coche a Todo Riesgo desde 300€

Just In:

[Whiter Clouds Could Mean Wetter Land](#)

Science Video News



3D Dental Implants

Researchers find that by imaging the mouth with a 3-D CT scan, they are able to create and insert a complete dental implant in one day. Instead of ... [full story](#)

[Forensic Scientists Improve DNA Analysis With Mummy-inspired Bone-baking](#)

[Biomedical Engineers Improve Dental Imaging And Care](#)

[Chemistry Provides Solution To Plug Pores In Teeth](#)

[more science videos](#)



Breaking News

... from NewsDaily.com

[Obama plan boosts foreign, private space projects](#)

[Ariane rocket puts two satellites into orbit](#)

[Study finds welfare cuts can cost lives](#)

["Jumping genes" make each person unique: study](#)

[U.S. scientists create artificial lungs, of sorts](#)

[more science news](#)

In Other News ...

[Strikes hit Greece and Spain as ECB deadline looms](#)

[Iran says nuclear talks to resume with Brazil, Turkey](#)

[Vatican says not liable in U.S. sexual abuse case](#)

[Google tweaks rerouting in fight for China business](#)

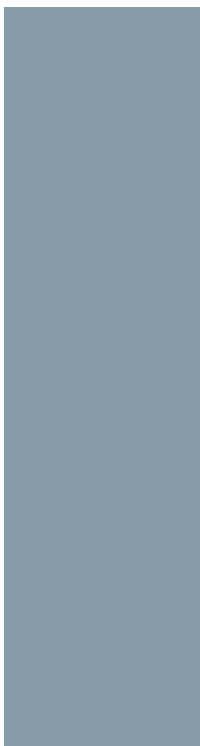
[Russia says U.S. spy accusations baseless and improper](#)

[Hurricane Alex to hamper BP's oil spill containment](#)

[China fends off Obama pressure over North Korea](#)

[Delay looms as Wall St bill seen "too big to fail"](#)

[more top news](#)



Journal Reference:

Stella Martin-de-las-Heras, Aurora Valenzuela, Juan de Dios Luna, Manuel Bravo. **The utility of dental patterns in forensic dentistry.** *Forensic Science International*, 2010; 195 (1-3): 166.e1 DOI: [10.1016/j.forsciint.2009.11.004](https://doi.org/10.1016/j.forsciint.2009.11.004)

¡Descubre los números que rigen tu vida!B35C/SMS
www.Poder-Numerologia.com

Get the latest science news with our free email newsletters, updated daily and weekly. Or view hourly updated newsfeeds in your RSS reader:

[Email Newsletters](#)

[RSS Newsfeeds](#)

Number of stories in archives: 87,968

Feedback

... we want to hear from you!

Need to cite this story in your essay, paper, or report? Use one of the following formats:

- ☒ **APA** FECYT - Spanish Foundation for Science and Technology (2010, June 29). Teeth of cadavers reveal their identity. *ScienceDaily*. Retrieved June 30, 2010, from <http://www.sciencedaily.com/releases/2010/06/100629094145.htm>
- ☐ **MLA**

Note: If no author is given, the source is cited instead.

Tell us what you think of the new ScienceDaily -- we welcome both positive and negative comments. Have any problems using the site? Questions?

Your Name:

Your Email:

Comments:

Find with keyword(s):

Search

Enter a keyword or phrase to search ScienceDaily's archives for related news topics, the latest news stories, reference articles, science videos, images, and books.

Click button to submit feedback:

Send It

[About This Site](#) | [Editorial Staff](#) | [Awards & Reviews](#) | [Contribute News](#) | [Advertise With Us](#) | [Privacy Policy](#) | [Terms of Use](#)
Copyright © 1995-2010 ScienceDaily LLC — All rights reserved — Contact: editor@sciencedaily.com
Part of the iVillage Your Total Health Network