



Reuters Money

For news that moves the markets
[Click here](#)

INTRODUCING A
BETTER GUT INSTINCT.
[LEARN MORE](#) 



THOMSON REUTERS
KNOWLEDGE TO ACT

You are here: [Home](#) > [News](#) > [Health](#) > Article

Tue 31 Mar 2009 | 14:52 IST

- HOME
- MONEY
- NEWS
- Top News
- South Asia
- World
- Entertainment
- Sports
- Formula 1
- Cricket
- Technology
- Health
- Lifestyle
- Oddly Enough
- Video
- Pictures
- Blogs

Heavy pot smoking may trigger psychosis: study

Tue Mar 31, 2009 12:51am IST

[Email](#) | [Print](#) | [Share](#) | [Single Page](#) [-] Text [+]

NEW YORK (Reuters Health) - Among individuals who appear to be "mentally well," heavy use of marijuana may predispose them to develop schizophrenia and other "psychoses," new research suggests.

Among 92 patients, ages 18 to 65 years, who suffered a first episode of functional psychotic illness, more than half said they smoked marijuana daily or nearly every day and most of these individuals (66 percent) had no pre-existing signs of abnormal neurological development that would put them at risk for psychosis.

They had no family history of psychosis; they had been doing well academically; they had a group of friends and as such were not socially isolated; and they had good muscle coordination, Dr. Miguel Ruiz-Veguilla, of the Institute of Neurosciences of the University of Granada, Spain, and co-investigators explain in the latest issue of the journal Schizophrenia Research.

The remaining 43 percent of the study subjects with a first psychotic episode did have signs of abnormal neurological development that increased their risk of psychosis, such as a family history of psychosis and trouble in the social and academic worlds.

The new and most interesting study finding, wrote the researchers, is that mentally healthy adults who smoke marijuana daily or nearly every day may experience psychotic symptoms, while not having any of the risk factors for these symptoms.

This study, Veguilla further explained in comments to Reuters Health, suggests that patients with poor social and academic adjustment before the onset of illness "do not need an environmental factor in order to develop psychosis."

While people with good social and academic adjustment before the onset of psychosis illness - defined as have more than five friends; good academic function; good motor coordination and sensory integration; and no family history of psychosis -- need a strong environmental factor, such as smoking cannabis every day, to develop psychosis."

SOURCE: Schizophrenia Research 2009.

© Thomson Reuters 2009 All rights reserved

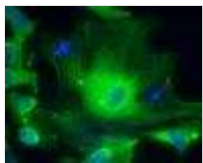
SHARE: [Del.icio.us](#) [Digg](#) [Mixx](#) [Yahoo!](#) [Facebook](#) [Newsvine](#)

MORE ON STEM CELLS

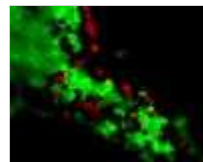
Scientists remove cancer genes from stem cells



Researchers find safer way to make stem cells



Q+A - First human tests of embryonic stem cell



Stem cells help foot bones heal



MORE HEALTH

- [Healthcare reform vital, U.S. health agency says](#)
- [Rise in late preterm births cause for concern: study](#)
- [Fat infants at risk of being obese toddlers: study](#)
- [Multiple sclerosis may lead to lower cancer risk](#)
- [Mom's infection may affect baby's heart: study](#)
- [Share information and stop disease outbreaks: study](#)
- [More Health News...](#)

FEATURED BLOGS



MOST POPULAR ON REUTERS

- [South India hunt for fleeing Tamil Tiger rebels](#)
- [As IBM-Sun Micro talks drag on, analysts eye risks](#)
- [India hails US Afghan plan, says ready for a role](#)
- Slideshow:** [Lakme Fashion Week - Day 3](#)
- Video:** [Campbell walks the ramp in Mumbai](#)

replay

Dell Vostro™ 1510 Laptop

Now Only **Rs.42,000****

[CLICK HERE FOR EXCLUSIVE OFFERS FROM DELL & MICROSOFT](#)

Now Only Rs.46,800**

Dell Vostro™ 220s Desktop

intel Core 2 Duo Do More

DELL YOURS IS HERE

VIDEO

- [Video](#)
[Chidambaram condemns Lahore attack](#)
- [Video](#)
[Madonna adoption hearing](#)
- [Video](#)
[Beer still recession proof?](#)

SPECIAL COVERAGE

Election 2009

- [The Satyam Story](#)
- [India battles credit crisis](#)
- [Protectionism - Pain of Global Downturn](#)



ALSO ON REUTERS

Lakme Fashion Week

Snapshots from day four of the Lakme Fashion Week in Mumbai.
Slideshow

- Blog:** [Does Indian fashion really need celebrity showstoppers?](#)
- Slideshow:** [Day Three](#)



Nonbelievers

A new day for U.S. atheists?
Full Article



Please Vote

Website lures voters to the polls.
Video



Candy Store

Established in 1827, the family-run store is the "The Oldest Sweet Shop in England". **Slideshow**



LODHA BELLEZZA
The address By invitation only

Hyderabad's First

By Invitation Only

Get Invited

Replay

Do More With Reuters

- [RSS](#)
- [Widgets](#)
- [Mobile](#)
- [Newsletters **New!**](#)

About Thomson Reuters