

Science Centric | RSS feeds

Thursday, 6 November 2008

Google Custom Search

GO

SCIENCE CENTRIC

HOME | NEWS | TRAVEL | ART & STYLE | COMPENDIUM | SC BLOG |

Physics | Chemistry | Geology and palaeontology | Biology | Environment | Astronomy | Health | Technology | — In pictures | — InMotion |

Where am I? > [Home](#) > [News](#) > [Chemistry](#)

Very cold ice films in laboratory reveal mysteries of Universe

Science Centric | 5 November 2008 15:02 GMT —

Life Science Venture
Source of Capital to Middle Market. Senior Debt, Mezzanine and Equity.
EuropeanCapital.com

Vuelos a Granada, 28€
Ofertas Vuelos regulares y Low Cost ¡Ahorra tiempo y dinero con logi!
www.logitravel.com

Oposiciones en Granada
Oposiciones Aux Administrativo en Granada. Prepárate con Garantías
OposicionAuxiliarAdministrativo.com

Icy Cools - Made in USA
Reusable Cubes, Mats, Snakes Innovating Hot/Cold for 10 Years
www.icycools.com



Could life have started in a lump of ice? The Universe is full of water, mostly in the form of very cold ice films deposited on interstellar dust particles, but until recently little was known about the detailed small scale structure. Now the latest quick freezing techniques coupled with sophisticated scanning electron microscopy techniques, are allowing physicists to create ice films in cold conditions similar to outer space and observe the detailed molecular organisation, yielding clues to fundamental questions including possibly the origin of life. Researchers have been surprised by some of the results, not least by the sheer beauty of some of the images created, according to Julyan Cartwright, a specialist in ice structures at the Andalusian Institute for Earth Sciences (IACT) of the Spanish Research Council (CSIC) and the University of Granada in Spain.

Recent discoveries about the structure of ice films in astrophysical conditions at the mesoscale, which is the size just above the molecular level, were discussed at a recent workshop organised by the European Science Foundation (ESF) and co-chaired by Cartwright alongside C. Ignacio Sainz-Diaz, also from the IACT. As Cartwright noted, many of the discoveries about ice structures at low temperatures were made possible by earlier research into industrial applications involving deposits of thin films upon an underlying substrate (ie the surface, such as a rock, to which the film is attached), such as manufacture of ceramics and semiconductors. In turn the study of ice films could lead to insights of value in such industrial applications.

But the ESF workshop's main focus was on ice in space, usually formed at temperatures far lower than even the coldest places on earth, between 3 and 90 degrees above absolute zero (3-90K). Most of the ice is on dust grains because there are so many of them, but some ice is on larger bodies such as asteroids, comets, cold moons or planets, and occasionally planets capable of supporting life such as Earth. At low temperatures, ice can form different structures at the mesoscale than under terrestrial conditions, and in some cases can be amorphous in form, that is like a glass with the molecules in effect frozen in space, rather than as crystals. For ice to be amorphous, water has to be cooled to its glass transition temperature of about 130 K without ice crystals having formed first. To do this in the laboratory requires rapid cooling, which Cartwright and colleagues achieved in their work with a helium 'cold finger' incorporated in a scanning electron microscope to take the images.

As Cartwright observed, ice can exist in a combination of crystalline and amorphous forms, in other words as a mixture of order and disorder, with many variants depending on the temperature at which freezing actually occurred. In his latest work, Cartwright and colleagues have shown that ice at the mesoscale comprises all sorts of different characteristic shapes associated with the temperature and pressure of freezing, also depending on the surface properties of the substrate. For example when formed on a titanium substrate at the very low temperature of 6K, ice has a characteristic cauliflower structure.

Most intriguingly, ice under certain conditions produces biomimetic forms, meaning that they appear life like, with shapes like palm leaves or worms, or even at a smaller scale like bacteria. This led Cartwright to point out that researchers should not assume that lifelike forms in objects obtained from space, like Mars rock, is evidence that life actually existed there. 'If one goes to another planet and sees small wormlike or palm like structures, one should not immediately call a press conference announcing alien life has been found,' said Cartwright.

On the other hand the existence of lifelike biomimetic structures in ice



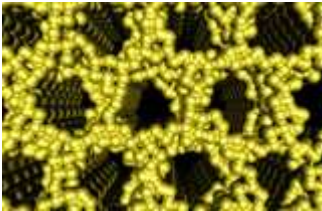
DON'T MISS —



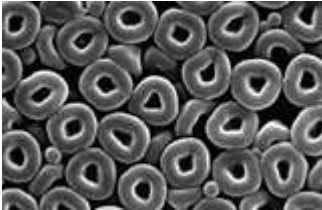
[New \\$11 million centre to speed drug discovery process](#) — [21 Oct] — Scientists from three Chicago-area universities have joined forces to develop new ways of building state-of-the-art chemical...



[Panoramic view into the microcosm](#) — [8 Sep] — What looks like the intricate makings of a futuristic sculptor is the product of nature itself. The spherical spores of the...



[Novel method 'self-assembles' metal atoms into porous nanostructures](#) — [1 Jul] — For 5,000 years the only way to shape metal has been by the 'heat and beat' technique. Even with modern nanotechnology, metalworking...



[Cells have an appetite for micro-doughnuts](#) — [25 Jun] — Just like humans, liver cells can't resist eating just one or two small doughnuts, say chemists from Scotland in the Royal...



[Pumice as a time witness](#) — [23 Jun] — A chemist of Vienna University of Technology demonstrates how chemical fingerprints of volcanic eruptions

Tags

[biomimetic](#), [films](#), [freezing](#), [ice](#), [mesoscale](#), [structures](#), [temperature](#)

LATEST	MOST E-MAILED	ARCHIVE
--------	---------------	---------

- Simulation could solve mystery of 'dark matter'
- Climate change threatens lemmings in Norway
- Electron pairs precede high-temperature superconductivity
- Student entrepreneurs working to green the economy
- Very cold ice films in laboratory reveal mysteries of Universe
- Genetic predictors of oesophageal cancer identified
- Review examines breast cancer prevention strategies in the United States
- Extended-treatment with combination medication for opioid-addicted youths shows benefit
- Impact of insulin pump under study
- Maternal obesity can program foetal brain to induce adult-onset obesity
- An anti-frailty pill for seniors?
- Wide variability in rheumatoid arthritis drug suggests alternative dosing should be considered

- [More](#) recent stories...
- Cumulative radiation exposure shows increased cancer risk for emergency department patients
- Dye-coated glass to channel energy into solar cells
- Intestinal bacteria promote - and prevent! - inflammatory bowel disease
- Scientists discover how rheumatoid arthritis causes bone loss
- The upside to allergies: Cancer prevention
- Protein on 'speed' linked to ADHD
- Fish scales show ocean fate of Atlantic salmon
- Common bronchodilator linked to increased deaths
- Mast cells play a role in assisting immune system to combat tularaemia
- Joint replacement may improve osteoarthritis symptoms in older adults
- Solar eclipse on Friday, 1 August
- Major discovery from MIT primed to unleash solar revolution

2007 — [II](#) [III](#) [IV](#) [V](#) [VI](#) [VII](#) [VIII](#) [IX](#) [X](#) [XI](#) [XII](#)

2008 — [I](#) [II](#) [III](#) [IV](#) [V](#) [VI](#) [VII](#) [VIII](#) [IX](#) [X](#) [XI](#)



— [Advertise here](#)

suggests that nature may well have copied physics. It is even possible that while ice is too cold to support most life as we know it, it may have provided a suitable internal environment for prebiotic life to have emerged.

'It is clear that biology does use physics,' said Cartwright. 'Indeed, how could it not do? So we shouldn't be surprised to see that sometimes biological structures clearly make use of simple physical principles. Then, going back in time, it seems reasonable to posit that when life first emerged, it would have been using as a container something much simpler than today's cell membrane, probably some sort of simple vesicle of the sort found in soap bubbles. This sort of vesicle can be found in abiotic systems today, both in hot conditions, in the chemistry associated with 'black smokers' on the sea floor, which is currently favoured as a possible origin of life, but also in the chemistry of sea ice.'

This is an intriguing idea that will be explored further in projects spawned by the ESF workshop. This may provide a new twist to the idea that life arrived from space. It may be that the precursors of life came from space, but that the actual carbon based biochemistry of all organisms on Earth evolved on this planet.

Source: [European Science Foundation](#)



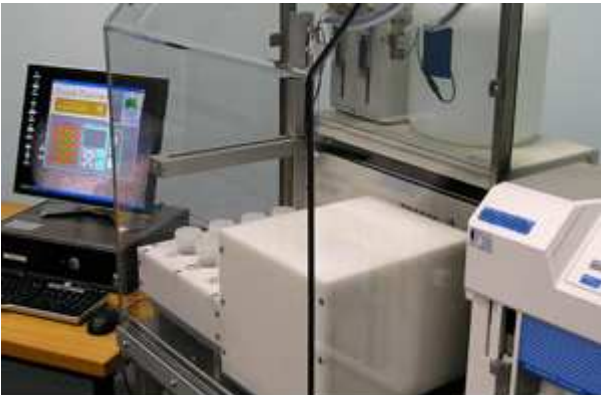
Latest on Science Centric | News

HEADLINES —

- [Simulation could solve mystery of 'dark matter'](#) — 5 Nov 18:00
- [Climate change threatens lemmings in Norway](#) — 5 Nov 18:00
- [Electron pairs precede high-temperature superconductivity](#) — 5 Nov 18:00
- [Student entrepreneurs working to green the economy](#) — 5 Nov 15:02
- [Very cold ice films in laboratory reveal mysteries of Universe](#) — 5 Nov 15:02
- [Genetic predictors of oesophageal cancer identified](#) — 5 Nov 15:02

VIDEOS —

- ['Naked eye' gamma-ray burst was aimed almost directly at the Earth](#) — The Universe's brightest explosion ever seen was observed on 19 March this year.... [10 Sep 17:00]
- [Hubble telescope sees magnetic monster in erupting galaxy](#) — Hubble Space Telescope has found an answer to a long-standing puzzle by resolving... [20 Aug 18:54]
- [Globular clusters tell tale of star formation](#) — Globular star clusters, dense bunches of hundreds of thousands of stars, have... [5 Aug 14:16]
- [Satellites discover what powers Northern Lights](#) — Researchers using a fleet of five NASA satellites have discovered that explosions... [24 Jul 18:12]



[In pictures](#) —

Google Custom Search

GO

Science Centric — Info source in natural sciences and technology, breaking news
[Front page](#) | [News](#) | [Travel](#) | [Art & style](#) | [Compendium](#) | [SC Blog](#)
[Resources](#) | [Site map](#) | [Accessibility](#) | [About us](#) | [Contact us](#) | [RSS feeds](#)

Copyright © 2007—2008 Agency Science.
Science Centric delivers breaking news about the latest scientific discoveries in the fields of physics, chemistry, geology and palaeontology, biology, environment, astronomy, health, and technology. Use of this website assumes acceptance of [Terms of use](#) and [Privacy policy](#).

Agency Science — [Free Photo World](#) · [Lepidopterology](#)